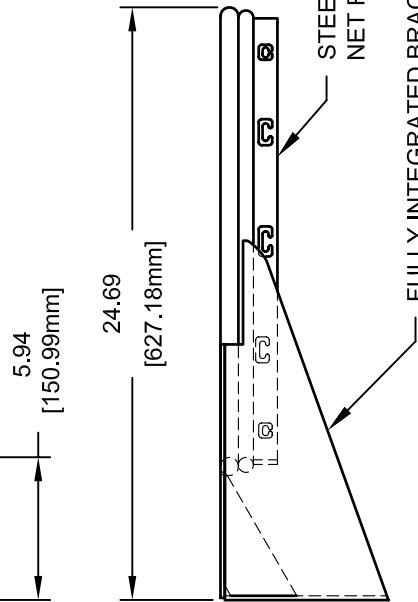
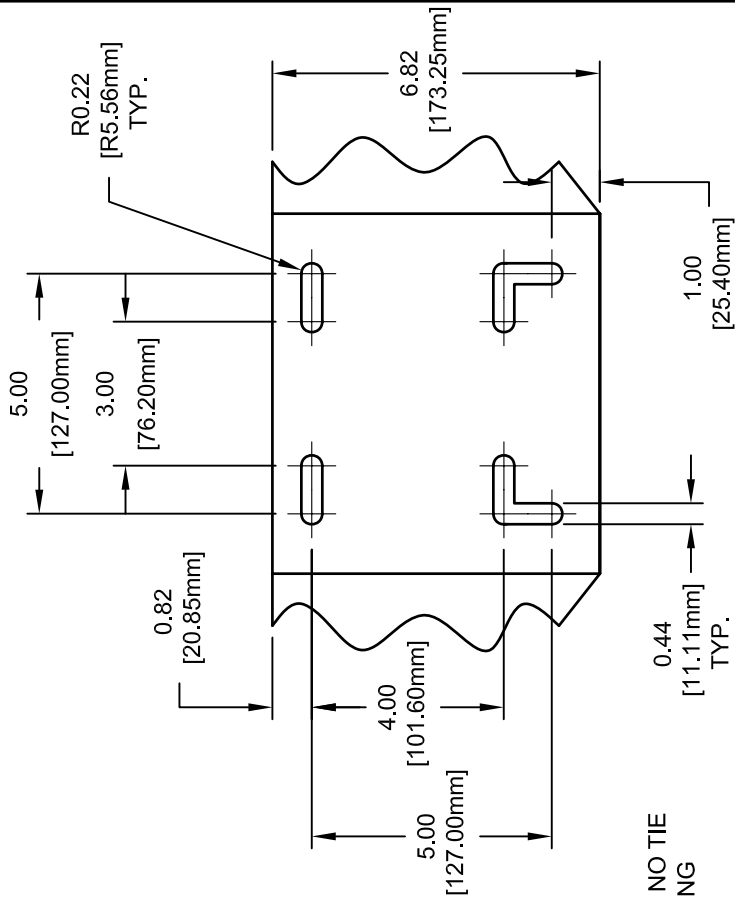
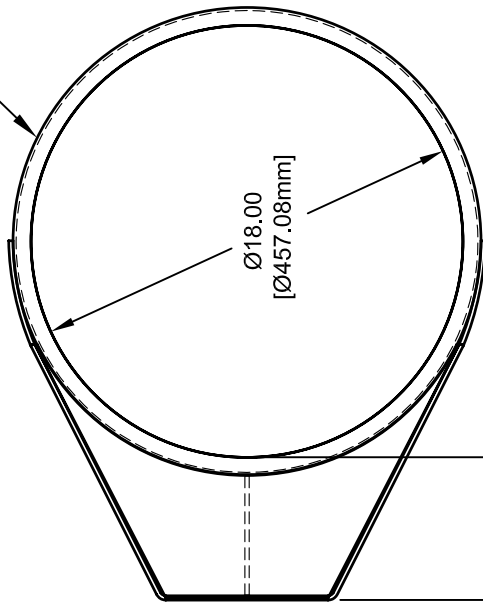


Ø0.75 [19.01] ALLOY STEEL ROD (UPPER)
 Ø0.63 [15.88] ALLOY STEEL ROD (LOWER)



MOUNTING PLATE VIEW
 SCALE 2:1

NOTE:
 FINISH TO BE OFFICIAL ORANGE POWDER COAT
 GOAL IS SUPPLIED WITH NYLON NET AND HARDWARE

REVISION		
REV.	DATE	BY
A	05/22/08	JJC




Gared Holdings, LLC
 9200 E. 146th St. Noblesville, IN 46060

THIS DOCUMENT CONTAINS TRADE SECRET AND OTHER MATERIALS WHICH ARE PROTECTED BY CONFIDENTIALITY NOTICE AND AGREEMENT AND BY COPYRIGHT. ANY USE OR COPYING OF THIS DOCUMENT EXCEPT AS AUTHORIZED BY GARED HOLDINGS, LLC IS STRICTLY PROHIBITED.

ENDURANCE SLAM FRONT MOUNT GOAL

DRAWN	SNOW	DATE	04/27/06	MATERIAL	N/A
APPROVED	JJC	DATE	04/27/06	FINISH	NOTED
FILE LOC. Q:\Final Release\Specifications				DWG. NO.	8550
SIZE	SCALE	SHT. NO.	PART NO.	REV	
A	NOTED	1 OF 1	8550	A	



MODEL 8550

ENDURANCE SLAM FRONT MOUNT GOAL

The 8550 goal shall be constructed with an official sized 18" ring of 3/4" diameter with an additional support ring of 5/8" diameter. A continuous no-tie ring with twelve net holders shall be welded to the lower support ring. Goal shall be made with high carbon/manganese materials for high strength. Back plate shall be 3/16" thick and 8" wide x 7" long. Brace shall be 3/16" thick fully welded to the goal ring and back plate. An additional 3/16" thick stiffener plate is added in the center of the back plate for added strength.

Goal shall have a durable orange powder coated finish and come complete with nylon net and zinc plated mounting hardware. Universal goal mounting plate will fit hole patterns for most 42", 48", and fan-shaped backboards.

ACCESSORIES

BACKBOARDS

Compatible backboards are models 1301B, 1342B, 1370B, 1245T, 1270B, 1272B, 1401B, 1442B, 1750B, BB60A38, BB60G38, BB72A38, BB72G50, RG, AFRG48, and FSGII. See backboard section in specification manual.