

4.0" [101.6 mm] ROUND EXTRUDED ALUMINUM FRAME.

1.66" [42 mm] O.D. GALVANIZED STEEL BACKSTAY.

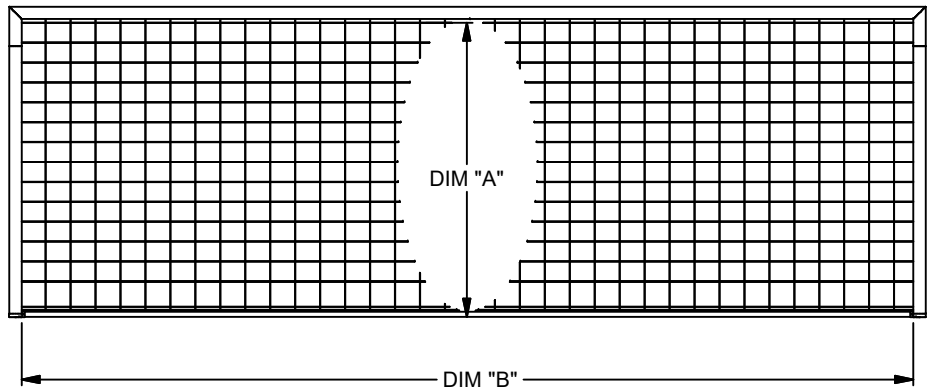
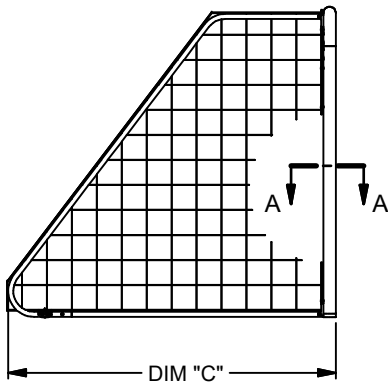
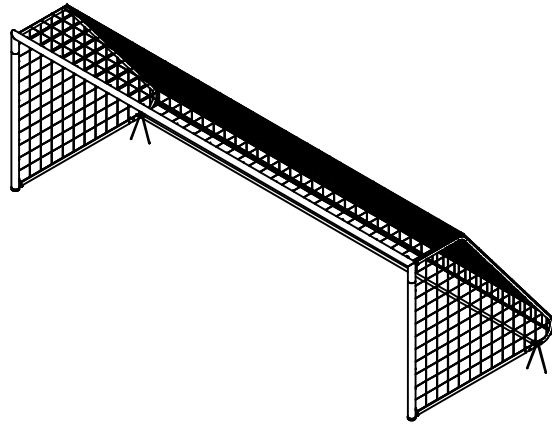
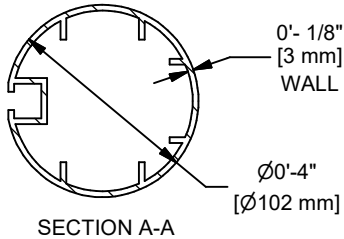
STAINLESS STEEL CONNECTION HARDWARE.

"J" STAKE ANCHORS SUPPLIED AS STANDARD. UNDERGROUND ANCHORS AVAILABLE AS AN OPTION AND AT ADDITIONAL COST.

SECURELY ANCHOR OR COUNTERWEIGHT GOALS AT ALL TIMES. SEE NOTICE BELOW.

NEVER CLIMB OR HANG ON THE NET OR GOAL FRAMEWORK.

| SGRD PORTABLE SOCCER GOAL | | | |
|---------------------------|---------------------------|---------------------------|---------------------------|
| MODEL | DIM "A" Ft-In (Meters) | DIM "B" Ft-In (Meters) | DIM "C" Ft-In (Meters) |
| SGRD824PT | 8'-0" (2.44M) | 24'-0" (7.32M) | 8'-10" (2.68M) |
| SGRD721PT | 7'-0" (2.13M) | 21'-0" (6.40M) | 7'-10" (2.38M) |
| SGRD618PT | 6'-6" (1.83M) | 18'-6" (5.64M) | 7'-4" (2.23M) |
| SGRD612PT | 6'-6" (1.83M) | 12'-0" (3.66M) | 7'-4" (2.23M) |



NOTICE

CONSUMER PRODUCT SAFETY ALERT
From the U.S. Consumer Product Safety Commission, Washington, D.C.

Portable/Moveable Soccer Goals can fall over causing serious injury or death. Securely anchor or counterweight portable goals at ALL times. Check ALL connecting hardware before EVERY use. When goals are not in use: tip goal on face, chain to nearby fence or store in secure area.

| | | |
|-----|-----|----------|
| B | MJP | 03/28/23 |
| A | JJC | 03/07/18 |
| REV | BY | DATE |




Gared Holdings, LLC
9200 E. 146th St. Noblesville, IN 46060

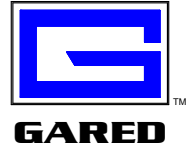
THIS DOCUMENT CONTAINS TRADE SECRET AND OTHER MATERIALS WHICH ARE PROTECTED BY CONFIDENTIALITY NOTICE AND AGREEMENT AND BY COPYRIGHT. ANY USE OR COPYING OF THIS DOCUMENT EXCEPT AS AUTHORIZED BY GARED HOLDINGS, LLC IS STRICTLY PROHIBITED.

4" ROUND FRAME PORTABLE SOCCER GOAL

| | | |
|--------------------|-------------------|--------------------------|
| DRAWN CONNERLEY | DATE 7/14/2014 | DATE ISSUED 7/14/2014 |
| APPROVED | DATE | |

FILE LOC. Q:\Inventor Files\

| | | | | |
|------------------|-------|--------------------|---------------------------|-----------------|
| SIZE A | SCALE | SHT. NO. 1 OF 2 | PART NO. SGRDPT | REV B |
|------------------|-------|--------------------|---------------------------|-----------------|



MODEL SGRDPT

PORTABLE SOCCER GOAL

This unit is designed for multi-use fields. Upright posts and cross bar are constructed of 4" round extruded aluminum tubing. Backstays and rear stabilizing bar constructed of 1.66" O.D. x 0.065" wall galvanized steel tubing. Available in goal sizes listed below. Standard finish is white powder coat on main goal frame. Optional finish is natural (unpainted).

Sold in pairs.

SGRD824PT - Size is 8' high x 24' wide x 8'-10" deep

SGRD721PT - Size is 7' high x 21' wide x 7'-10" deep

SGRD618PT - Size is 6'-6" high x 18'-6" wide x 7'-4" deep

SGRD612PT - Size is 6'-6" high x 12' wide x 7'-4" deep

SGRD824PT meets NCAA, NFSHSA and FIFA specifications.

Goal includes ground anchors*, net and net clips.

Standard Net

| | |
|----------|--|
| SN824-4W | Braided 4mm white soccer net, 8'H x 24'W |
| SN721-3W | Braided 3mm white soccer net, 7'H x 21'W |
| SN618-3W | Braided 3mm white soccer net, 6'-6"H x 18'-6"W |
| SN612-3W | Braided 3mm white soccer net, 6'-6"H x 12'W |

Optional Equipment:

SGWK Wheel adapter kit

***CONSUMER PRODUCT SAFETY ALERT**

From the U.S. Consumer Product Safety Commission, Washington, D.C.

Portable/Movable Soccer Goals can fall over causing serious injury or death. Securely anchor or counter weight portable goals at ALL times. Check ALL connecting hardware before EVERY use. When goals are not in use: tip goal on face, chain to nearby fence or store in secure area.

Subject to design change and current manufacturing practices