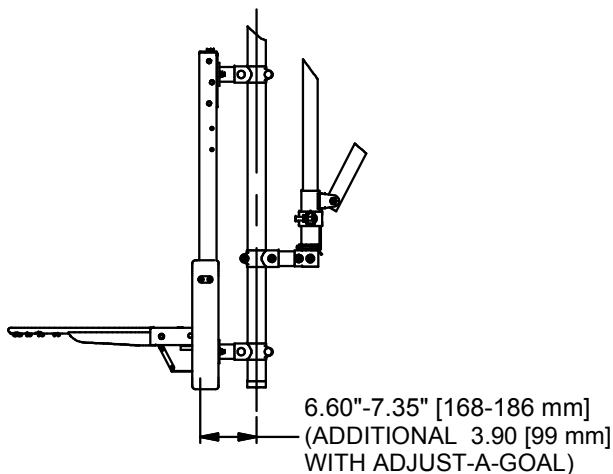
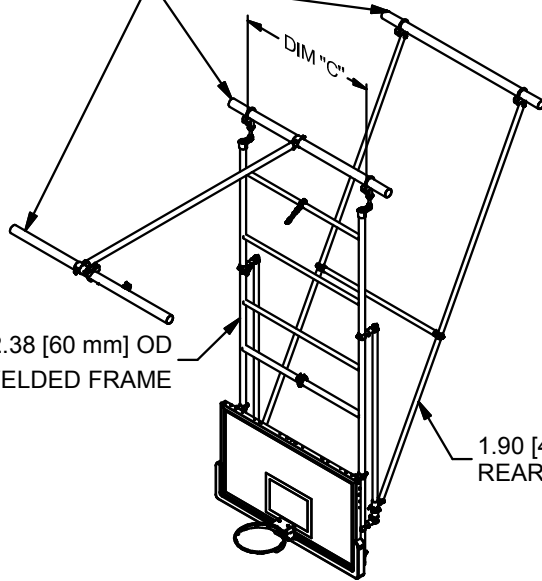
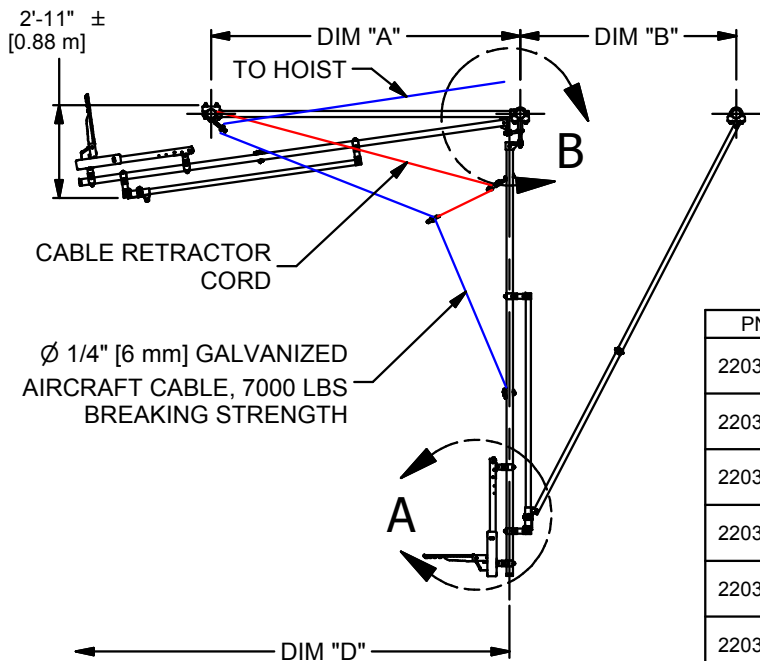


Ø 3.5 [90 mm] OD SUPERSTRUCTURE



DETAIL A



NOTE: DIM "C" IS 63" [1600 mm] WITH A RECTANGULAR BACKBOARD AND 35" [889 mm] WITH A FAN SHAPED BACKBOARD

Dimensions "A", "B", & "D" are shown for maximum elevation of the truss range and may vary to fit the exact attachment elevation and building structure.

| PN      | TRUSS HEIGHT                  | DIM "A"          | DIM "B"          | DIM "C"                            | DIM "D"            |
|---------|-------------------------------|------------------|------------------|------------------------------------|--------------------|
| 2203-18 | 18' to 18.99'<br>[5.49-5.78M] | 4'-8"<br>[1.42M] | 4'-2"<br>[1.27M] | 63" [1.6M] RECT<br>35" [0.89M] FAN | 8'-10"<br>[2.69M]  |
| 2203-19 | 19' to 19.99'<br>[5.79-6.09M] | 5'-8"<br>[1.73M] | 4'-8"<br>[1.42M] | 63" [1.6M] RECT<br>35" [0.89M] FAN | 9'-10"<br>[3.00M]  |
| 2203-20 | 20' to 20.99'<br>[6.10-6.39M] | 6'-8"<br>[2.03M] | 5'-3"<br>[1.60M] | 63" [1.6M] RECT<br>35" [0.89M] FAN | 10'-10"<br>[3.30M] |
| 2203-21 | 21' to 21.99'<br>[6.40-6.70M] | 7'-8"<br>[2.34M] | 5'-9"<br>[1.75M] | 63" [1.6M] RECT<br>35" [0.89M] FAN | 11'-10"<br>[3.61M] |
| 2203-22 | 22' to 22.99'<br>[6.71-7.0M]  | 8'-8"<br>[2.64M] | 6'-3"<br>[1.91M] | 63" [1.6M] RECT<br>35" [0.89M] FAN | 12'-10"<br>[3.91M] |
| 2203-23 | 23' to 23.99'<br>[7.01-7.31M] | 9'-8"<br>[2.95M] | 6'-9"<br>[2.06M] | 63" [1.6M] RECT<br>35" [0.89M] FAN | 13'-10"<br>[4.22M] |

|     |     |          |
|-----|-----|----------|
| D   | JJC | 08-06-19 |
| C   | RWP | 08/13/08 |
| B   | RWP | 05/23/08 |
| A   | JJC | 12/12/03 |
| REV | BY  | DATE     |

Gared Holdings, LLC  
9200 E. 146th St. Noblesville, IN 46060

THIS DOCUMENT CONTAINS TRADE SECRET AND OTHER MATERIALS WHICH ARE PROTECTED BY CONFIDENTIALITY NOTICE AND AGREEMENT AND BY COPYRIGHT. ANY USE OR COPYING OF THIS DOCUMENT EXCEPT AS AUTHORIZED BY GARED HOLDINGS, LLC IS STRICTLY PROHIBITED.

**REAR BRACED FRONT FOLD BACKSTOP**

|                    |                   |                          |
|--------------------|-------------------|--------------------------|
| DRAWN<br>CONNERLEY | DATE<br>4/24/2003 | DATE ISSUED<br>4/24/2003 |
| APPROVED           | DATE              |                          |

FILE LOC. Q:\Inventor Files\

|           |       |                    |                  |          |
|-----------|-------|--------------------|------------------|----------|
| SIZE<br>A | SCALE | SHT. NO.<br>1 OF 2 | PART NO.<br>2203 | REV<br>D |
|-----------|-------|--------------------|------------------|----------|



## MODEL 2203

### **WELDED DUAL POST REAR BRACED FRONT FOLDING BASKETBALL STRUCTURE**

#### **RECOMMENDED APPLICATION**

This unit is designed for applications allowing sufficient space behind the backboard for a rear brace. The 2203 dual post unit can be used at heights from 18' to 24' and when a height adjuster is not required. For heights above 24' or when a height adjuster is required, the model 2603 is recommended.

#### **SUPERSTRUCTURE**

Unit shall be supported from 3-1/2" O.D. x 0.120" wall ASTM A-500 Grade B horizontal and 2-3/8" O.D. x 14 gauge (0.083") wall ASTM A-500 Grade B vertical structural steel tubing secured to the building with heavy gauge steel stampings or weldments (as required by building conditions). When truss span widths exceed 10'-0", 3-1/2" O.D. x Schedule 40 (0.216") wall ASTM A-500 Grade B may be used for the horizontals. Spans over 14'-0" may use welded bridge pipe.

#### **BACKSTOP**

The backstop shall have two 2-3/8" O.D. x 14 gauge (0.083") wall ASTM A-500 Grade B vertical drop tubes spaced at 63" centers for rectangular backboards, 35" for fan shaped backboards. Vertical drops shall be cross-braced with 2-3/8" O.D. x 14 gauge (0.083") wall ASTM A-500 Grade B and 1-7/8" O.D. x 14 gauge (0.083") wall ASTM A-513 steel tubing welded on both ends. Ends of cross-brace tubes shall be saddle (die) cut to fit the outside diameter of the 2-3/8" O.D. drop tubing. Drop pipe shall be suspended with welded steel plate offset hangers 4" in front of the pivot point, less than 4" not approved as equal. All critical fittings shall be heavy gauge steel stampings, or weldments. Backstop manufactured in accordance with 1994 NCAA rule 1, section 8, stating that all parts of the backboard support system not directly behind backboard shall be at least 6" behind backboard.

Rear brace shall be 1-7/8" O.D. x 14 gauge (0.083") wall ASTM A-513 steel tubing and braced with 1-7/8" O.D. cross tubing. Slide rod mechanism shall have two slide rod bushings traveling on two, 1-7/8" O.D. slide rods. The entire assembly shall be self-aligning and designed to be self-locking and self-releasing. Backstop shall be raised and lowered with 1/4" galvanized aircraft cable with a breaking strength of 7000 lbs. Cable automatically retracts by means of 5/16" diameter shock cord.

All steel has a black powder coat finish, standard. Optional colors are available.

#### Accessories

**Backboards and Goals** - See the backboards and goals section in the specification manual.

**Backboard Padding** - See the accessories section in the specification manual.

**Hoists** - Electric hoist or manual winch is available on all folding units. See the accessories section in the specification manual.

**Safstop Safety Locking Strap** - See the accessories section in the specification manual.

Subject to design change and current manufacturing practices.