



ASSEMBLY INSTRUCTIONS
Volleyball Equipment Cart
Model #6295

HARDWARE LIST

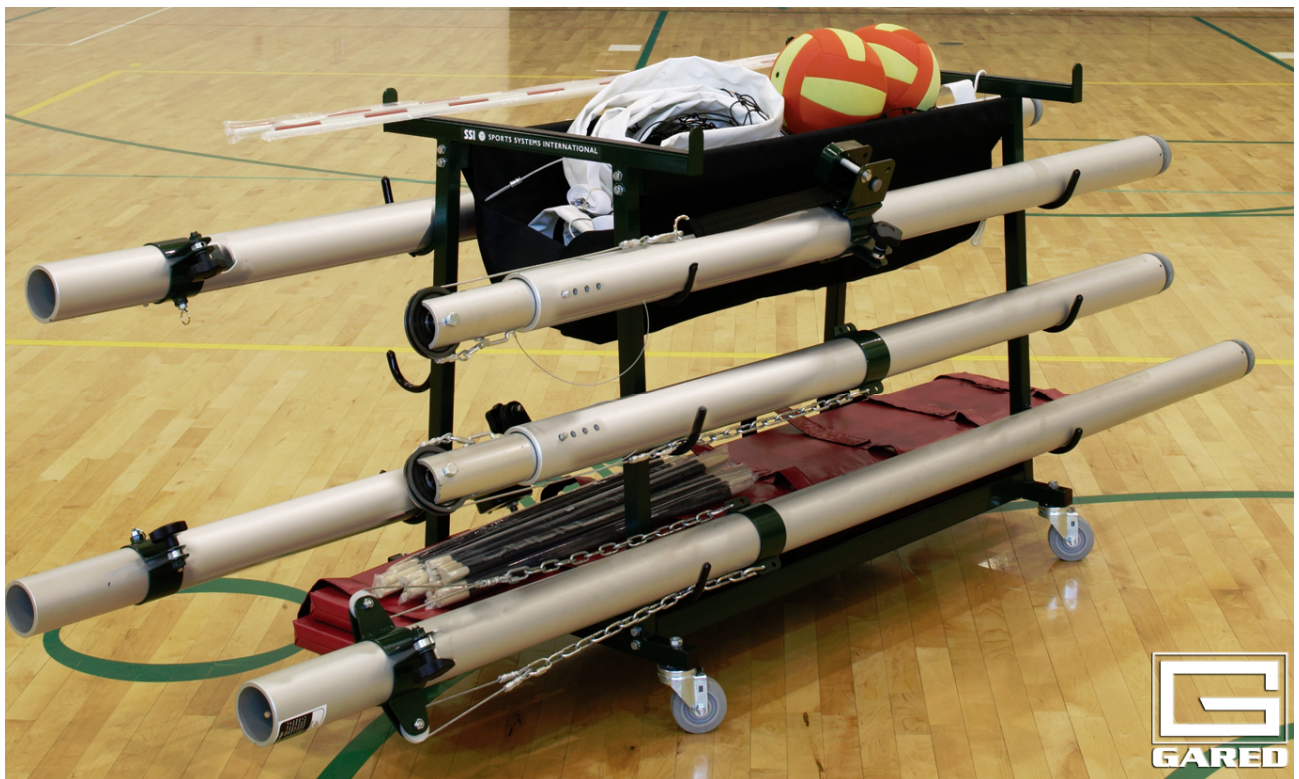
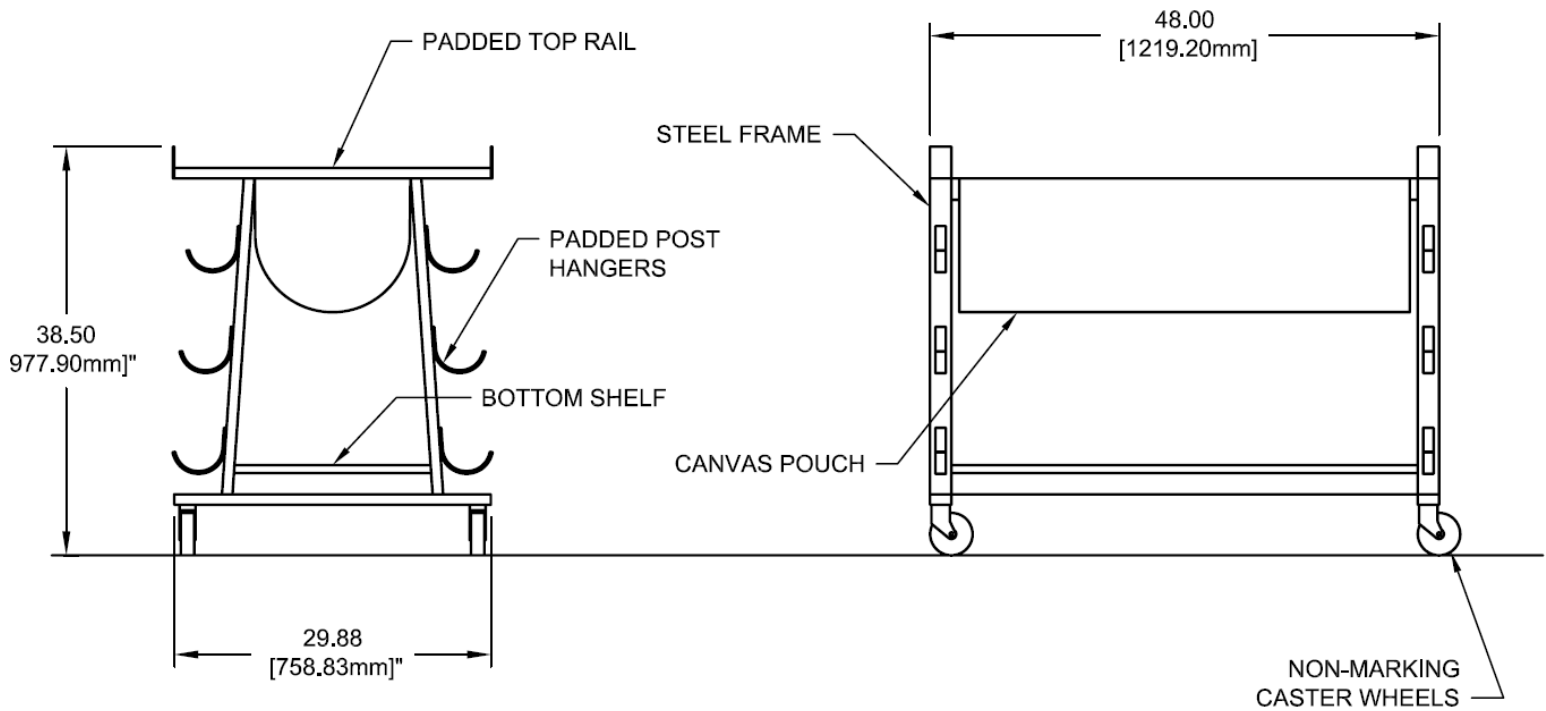
A	4 ea	1/2" lock washer
B	4 ea	1/2" hex nut
C	16 ea	8mm x 1.75 bol
D	16 ea	8mm flat washer

PARTS LIST

1	1 ea	Black Canvas Pouch
2	1 ea	Lower Shelf
3	4 ea	Caster Wheel
4	4 ea	Crossmember
5	2 ea	End Assembly (SS Logo)
6	4 ea	End Cap
7	12 ea	Rubber Sleeve

1. Using above Parts List, confirm that all parts and hardware are included.
2. Loosely attach two Crossmembers (4) to the bottom location of one of the End Assemblies (5) using two 8mm bolts (C) and two 8mm flat washers (D) per end, Repeat with other End Assembly (5). Do not tighten bolts until after Step 3. (SSI Logo on the End Assembly should face outward)
3. Carefully insert one the Crossmembers (4) through the sleeve of the Black Canvas Pouch (1) and attach ends to the End Assemblies (5) using two 8mm bolts (E) and two flat washers (D) per end. Repeat steps with the remaining Crossmember. Tighten all bolts securely.
4. With the unit tilted, insert the threaded stub of the Caster Wheels (3) through the intended holes in the End Assemblies and securely fasten each Wheel with one Lock Washer (A) and Hex Nut (B).
5. Position the Lower Shelf (2) on the Bottom Crossmembers (4) and End Assemblies (5).
6. Position the End Caps (6) into the ends of both End Assemblies (5) and tap in securely with a rubber mallet.
7. Place the Rubber Sleeves (7) onto each "hook" of the End Assemblies (5).

CAUTION: *This product is designed solely for the proper storage and transport of volleyball equipment and should not be used for any other purpose.*



Gared Holdings, LLC

Performance Sports Systems
 9200 E. 146th Street
 Noblesville, IN 46060
 800-848-8034
www.perfsports.com

Gared Sports
 9200 E. 146th Street
 Noblesville, IN 46060
 800-325-2682
www.garedsports.com